

3-Way Zone Valve Spring return

Fig. 8921

Standard

Connection meet: ISO228/1

Size range: 15mm(1/2")~25mm(1")

Testing Standard: EN12266-1

Technical data

Supply Voltage: AC220V \pm 10%, 50/60HZ

Motor: Synchronous motor

Power consumption: 6.5W, 7VA

Operation time: Open \leq 13s

Close \leq 7s (Spring return)

Nominal pressure: 16bar

Size: DN15~DN25

Testing pressure: Shell: 24bar

Seal: 17.6bar

Temperature range: 5°C ~ 90°C

Ambient Temperature: 5°C ~ 40°C

Type: Normal close

Media: Water, Glycol

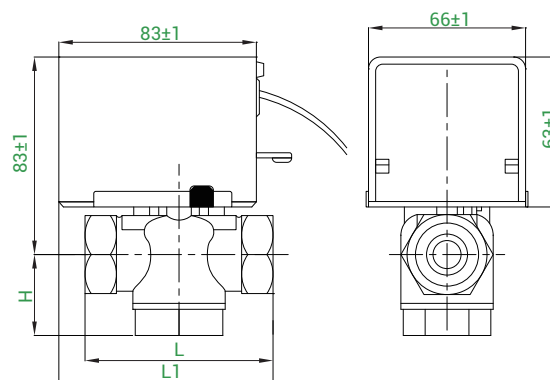
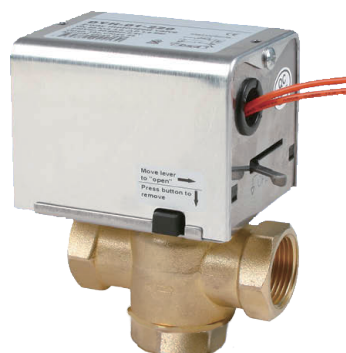
Specification

Part	Material	Standard
Body	Forged Brass	BS EN12165 CW617N
Shaft	Brass	BS EN12165 CW617N
Trim	EPDM	-
Actuator	Aluminum	-

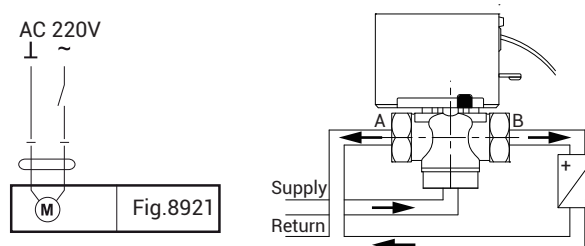
Dimensions

DN	mm	15	20	25
	inch	1/2	3/4	1
L		72	86	88
H		36	37	42
L1		88	96	98
Kvs		2.6	3.4	6.5
Close Δ P(MPa)		0.22	0.20	0.18
Connection		BSPP 1/2"	BSPP 3/4"	BSPP 1"

Schema



Wiring



Notice

1. Actuator must be horizontal;
2. Do not use force on the drive during installation;
3. The thread connected with the valve must be standard thread
4. The valve and pipeline should be kept clean before installation;
5. The valve and pipe recommended horizontal installation, can be installed vertically, but not inverted;
6. Ensure that the pipes and valves are insulated and do not wrap the Actuator in the thermal insulation layer.

Note: If the product is damaged due to improper installation or

WA reserves the right to change dimensions without notice.