

Three-piece hygienic butterfly valve

Fig. 2435

Application Description

The three-piece butterfly valve is a hygienic manually operated or self-operated butterfly valve series for ISO, DIN, IDF, SMS, 3A standard stainless steel piping systems for regulating the flow of media.

It is widely used in dairy products, beer, beverages, juices, pharmaceutical engineering, liquid-cooled data centers and other fields.

Working Principle

The three-piece butterfly valve offers flexible operation through manual lever (4 fixed positions) or duckbill handle (12 adjustable positions at 15° intervals), as well as electric/pneumatic actuators for automated 90° rotation control. Designed for precise flow regulation, it supports both local manual adjustment and remote automated operation in pipeline systems, ensuring reliable performance across industrial applications.

Schema



Technical data

Working pressure: 10 bar

Specification size: ISO: 33.7~114.3

DIN: DN25~DN150

SMS: SMS25 ~ SMS101.6

3A: 1 ~ 4

(Other specifications can be customized)

Operating temperature: -10°C~100°C

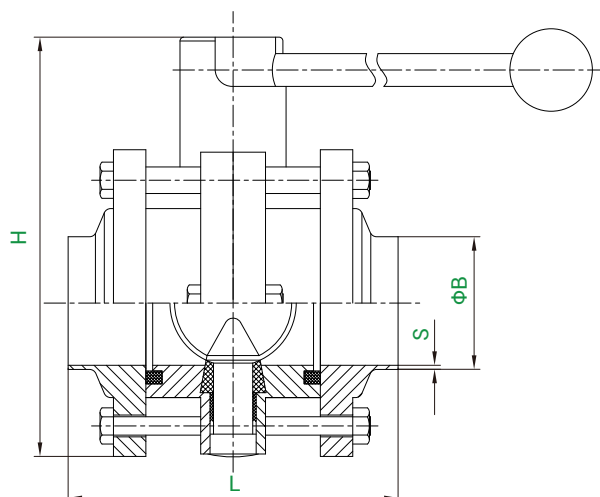
Material

Part	Material	Standard
Body	stainless steel	SUS304/SUS316L
Valve plate	stainless steel	SUS304/SUS316L
Seal	rubber	VQM、FPM、EPDM
HandWheel	stainless steel	SS304

Three-piece hygienic butterfly valve

Fig. 2435

Application Description



Dimensional

ISO

Size	S	B	L	H
33.7	2	33.7	90	120
42.4	2	42.4	90	125
48.3	2	48.3	90	130
60.3	2	60.3	105	150
76.1	2.3	76.1	105	188
114.3	2.6	114.3	105	208

Dimensional

DIN

Size	S	B	L	H
		Series1/Series2		
DN25	1.5	28/29	90	120
DN32	1.5	34/35	90	125
DN40	1.5	40/41	90	130
DN50	1.5	52/52	90	150
DN65	2	70	105	170
DN80	2	85	105	188
DN100	2	104	105	208
DN125	2	129	120	237
DN150	2	154	120	287

Dimensional

SMS

Size	S	B	L	H
SMS25	1.25	25	90	120
SMS38	1.25	38	90	130
SMS51	1.25	51	90	150
SMS63.5	1.5	63.5	105	170
SMS76	1.6	76.1	105	188
SMS101.6	2	101.6	105	208

Dimensional

3A

Size	S	B	L	H
1	1.65	25.4	90	120
1 1/2	1.65	38.1	90	130
2	1.65	50.8	90	150
2 1/2	1.65	63.5	105	170
3	1.65	76.2	105	188
4	2.11	101.6	105	208