

# Three-Piece Sanitary Ball Valve

**Fig. 4375**

Stainless steel Body • Geometric Drive • Replaceable Seat  
• Clamp Type

**Sizes 1/2" through 6"**

## APPLICATIONS

A sanitary ball valve designed for easy installation, disassembly, and cleaning, used for conveying gases, liquids, etc.

Compliant with ISO/IDF, DIN, 3A, SMS, BS/RJT, ASME/BPE standard pipeline installations.

Applications include food, beverage, pharmaceutical, chemical industry, and liquid cooling systems. Full bore and encapsulated seal design minimizes fluid resistance and residue.

## TECHNICAL DATA

Components: Ball with through cavity, valve body, valve stem, stem seal.

Connection types: Welded, Clamp, Threaded.

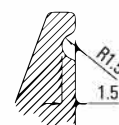
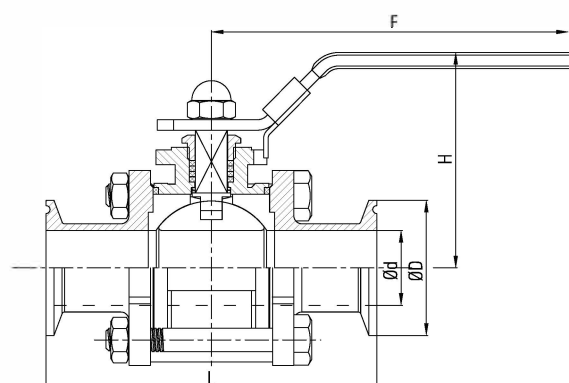
Features: Full port design, no dead space, high cleanliness, meets CIP/SIP requirements.

Temperature resistance: 150°C, Pressure: 25 bar.

Automatic seal compensation design: low torque, long life (>100,000 cycles).

Configurable with various actuators: Electric, Horizontal Pneumatic, Vertical Stainless Steel Pneumatic, Key Manual Handle. Pneumatic actuators mountable on 2-way or 3-way low/high platform ball valves per ISO 5211 (low platform valves require bracket).

Can be equipped with control units, positioners, limit switches, or automatic control systems.



## MATERIAL LIST

Part	Material	Standard
Body	Stainless steel	316 ASTM-CF8M A351
Ball Valve	Stainless steel	316 ASTM-CF8M A351
Seat	PTFE	-

## DIMENSIONS

Size	1/2"	3/4"	1"	1 1/4"	1 1/2"	2"	2 1/2"	3"	4"	5"	6"
Ød	9.4	16	22.1	28.5	34.9	47.5	59.5	72.2	97.6	125	150
ØD	25.5	50.5	50.5	50.5	64	77.5	91	106	119	145	183
L	90	104	115	125	140	156	198	230	242	290	340
H	60	64.5	69	75	89	97	127	135	159	210	249
F	132	132	165	170	194	194	252	252	332	350	430

Visit our website for the most current information.