

Three-Piece Sanitary Ball Valve

Fig. 4355

Stainless steel Body • Geometric Drive • Replaceable Seat
• Welding Type

Sizes 1/2" through 6"

APPLICATIONS

A sanitary ball valve designed for easy installation, disassembly, and cleaning, used for conveying gases, liquids, etc.

Compliant with ISO/IDF, DIN, 3A, SMS, BS/RJT, ASME/BPE standard pipeline installations.

Applications include food, beverage, pharmaceutical, chemical industry, and liquid cooling systems. Full bore and encapsulated seal design minimizes fluid resistance and residue.



TECHNICAL DATA

Components: Ball with through cavity, valve body, valve stem, stem seal.

Connection types: Welded, Clamp, Threaded.

Features: Full port design, no dead space, high cleanliness, meets CIP/SIP requirements.

Temperature resistance: 150°C, Pressure: 25 bar.

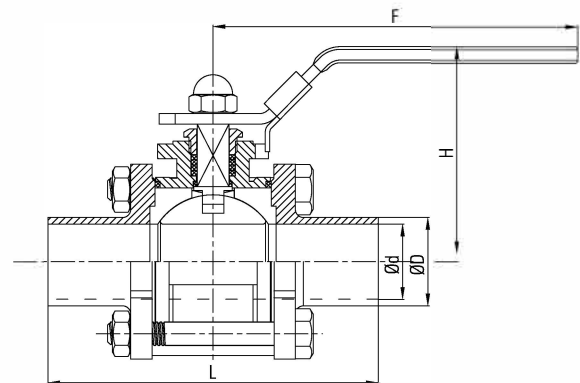
Automatic seal compensation design: low torque, long life (>100,000 cycles).

Configurable with various actuators: Electric, Horizontal Pneumatic, Vertical Stainless Steel Pneumatic, Key Manual Handle. Pneumatic actuators mountable on 2-way or 3-way low/high platform ball valves per ISO 5211 (low platform valves require bracket).

Can be equipped with control units, positioners, limit switches, or automatic control systems.

MATERIAL LIST

Part	Material	Standard
Body	Stainless steel	316 ASTM-CF8M A351
Ball Valve	Stainless steel	316 ASTM-CF8M A351
Seat	PTFE	-



DIMENSIONS

Size	1/2"	3/4"	1"	1 1/4"	1 1/2"	2"	2 1/2"	3"	4"	5"	6"
Ød	9.4	16	22.1	28.5	34.9	47.5	59.5	72.2	97.6	125	150
ØD	12.7	19	25.4	31.8	38.1	50.8	63.5	76.2	101.6	129	154
L	90	104	115	125	140	156	198	230	242	290	340
H	60	64.5	69	75	89	97	127	135	159	210	249
F	132	132	165	170	194	194	252	252	332	350	430

Visit our website for the most current information.